

## Home Diagnostics, Inc. USB Data Cable User's Manual

Home Diagnostics, Inc.  
2500 N.W. 55<sup>th</sup> CT  
Ft. Lauderdale, Florida 33309  
TEL: 1-800-342-7226  
<http://www.hdidabetes.com>

## Home Diagnostics, Inc. USB Data Cable User's Manual

### Copyright

Copyright © 2005, Home Diagnostics, Inc. All rights are reserved. The information contained herein cannot be reproduced in any form without the written consent of Home Diagnostics, Inc. Any Software products that might go along with this document can only be used in accordance with any license agreement(s) between the end-user and Home Diagnostics, Inc. Home Diagnostics, Inc. reserves the right to change this documentation, the product, or any software program(s) applicable to the product at any time and without notice.

### Disclaimer

The information contained in this Manual is believed to be accurate and reliable at the time of its posting. Notwithstanding the foregoing, Home Diagnostics, Inc. assumes no responsibility for any damage or loss resulting from the use of this Manual, product, and/or any product-related software program(s) that might accompany the product.

## Introduction

This User's Manual describes how to setup and install the Home Diagnostics, Inc. USB Data Cable.

The Home Diagnostics, Inc. USB Data Cable (Hereon referred as "the Cable") provides a serial interface between a Home Diagnostics, Inc. Prestige or True Track Smart Systems™ Glucose Meter and a host computer (PC), via a USB Port.

The Cable is a Plug-and-Play (PNP) device and requires software drivers to operate. Your computer's BIOS or Operating System automatically configures and assigns a port when the Cable is connected.

## System Requirements

The Cable is compatible with Microsoft® Windows™ 98SE/2000/Xp Operating Systems running on an IBM or IBM-compatible computer. Drivers are available for download from the Home Diagnostics, Inc. World Wide Web site at <http://www.hdidiabetes.com>.

## Installing the Cable's Software Drivers

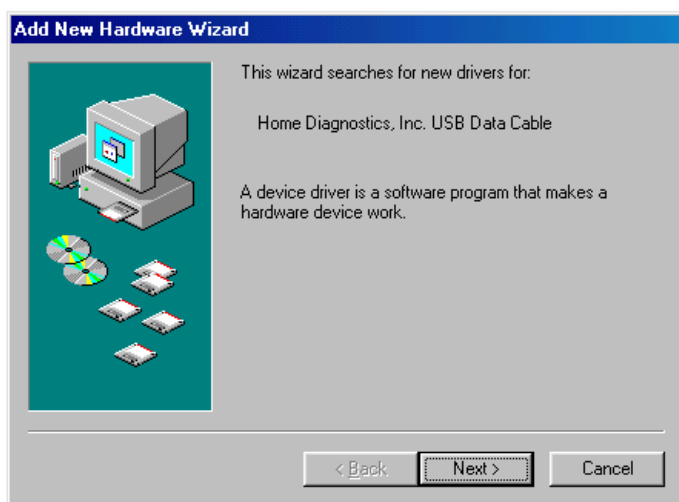
This section explains how to install the Cable's software drivers under the different operating systems. Please refer to and follow the section applicable to your computer's operating system.

The software driver(s) includes all applicable file(s) that allows the Cable's configuration under the Windows™ environment, and updates the Windows™ registry accordingly.

**Note:** Installation/Un-installation of Hardware drivers require a user with administrative privileges to be logged in.

### Windows™ 98SE (Second Edition) Installation

1. Turn on Power to your computer (PC).
2. Insert the Home Diagnostics, Inc. installation CD into your computer's CD-ROM drive.
3. Plug the USB connector end of the Cable into one of the computer's USB port.



*Windows™ should inform you that it has found new hardware and automatically launches the "Add New Hardware" Wizard.*

4. Click the <Next> button.



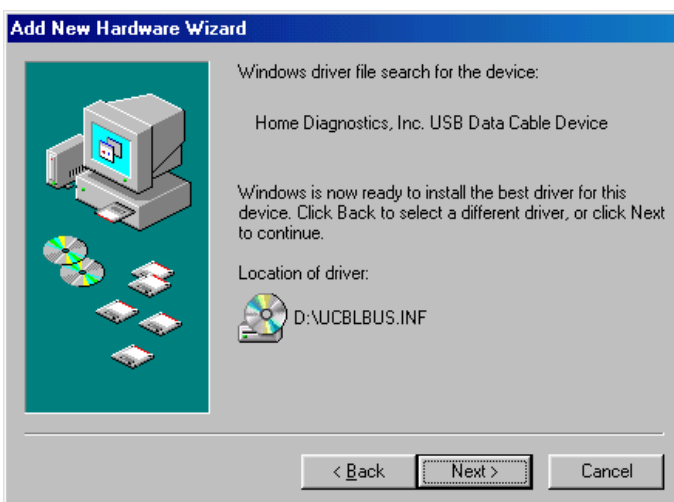
*Windows™ should prompt you with Search Options. Select Search for the best driver for your device (recommended)*

5. Click the <Next> button.



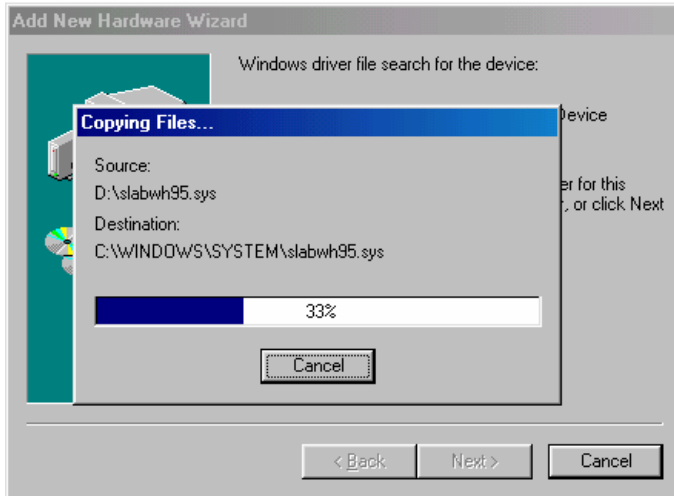
*Windows™ should then prompt you with driver files location, and/or driver files install media. Select CD-ROM drive*

6. Click the <Next> button.



*Windows™ should inform you that it has located the driver install files*

7. Click the <Next> button.



*Windows™ should begin driver installation*



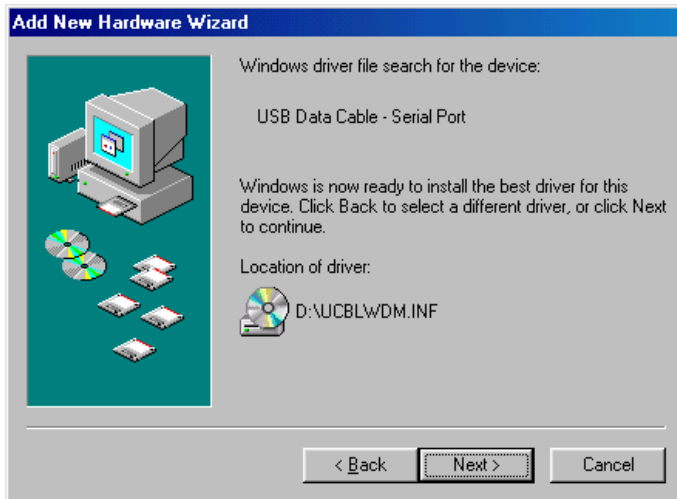
*Windows™ should inform you that it has finished with the driver installation. This only applies to the USB Device portion of the drivers, and you must still install drivers for the Serial Port portion*

8. Click Finish to continue with installation of Serial Port drivers.



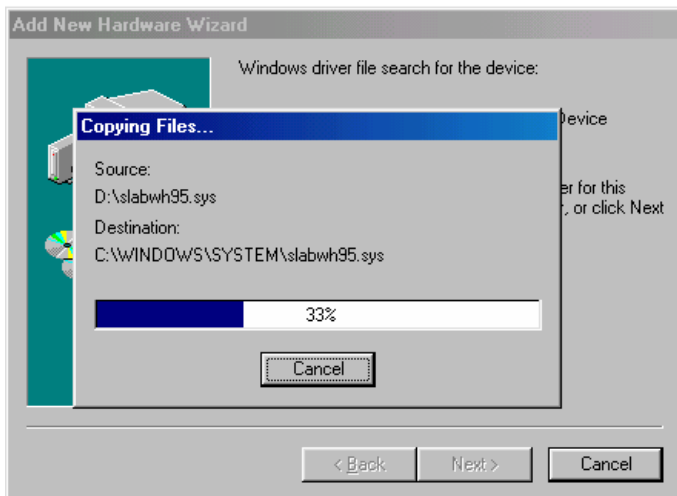
*Windows™ should again inform you that it has found new hardware and automatically launches the "Add New Hardware" Wizard*

9. Click Next to continue.



*Windows™ should inform you that it has located the driver install files*

10. Click Next to continue.



*Windows™ should begin driver installation*



*Once finished, Windows™ will inform that the Serial Port portion of the drivers is installed.*

*By going to the Device Manager under "System" in the Windows™ 98 Control Panel you should be able to see the installed Home Diagnostics, Inc. USB Data Cable Device.*

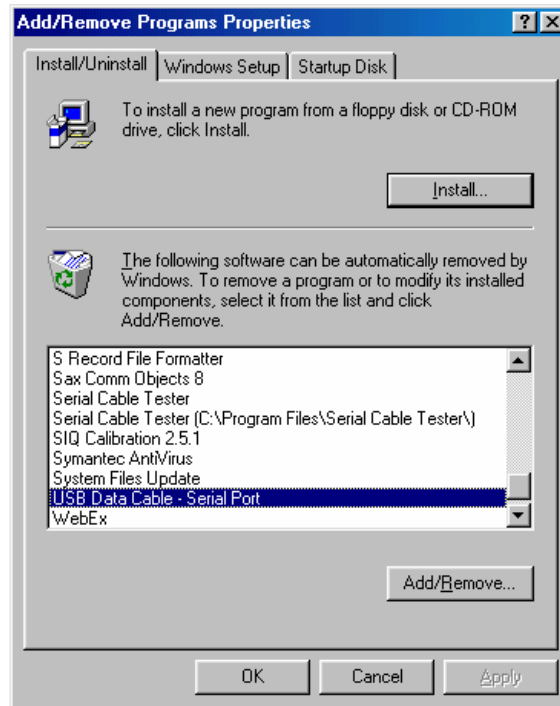
*An entry should be present under Universal Serial Bus Controllers, and another one under Ports (COM and LPT).*

*Note: COM Port Settings (Bits per Second, etc) will need to be configured as per the requirements of your particular Download Application.*

11. Click Finish to complete the installation.

Windows™ 98SE (Second Edition) Un-Install

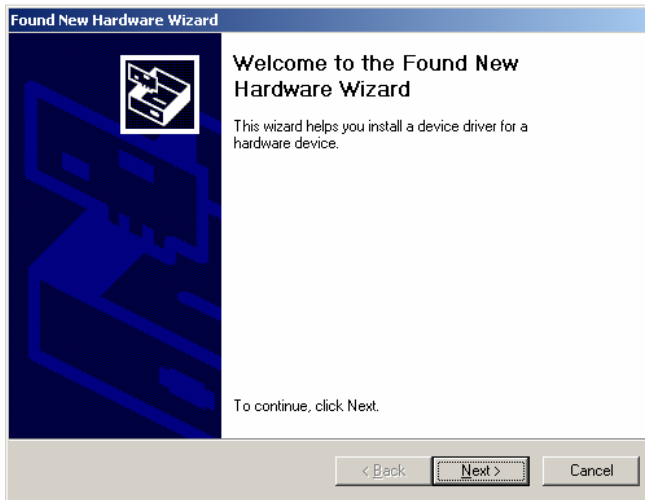
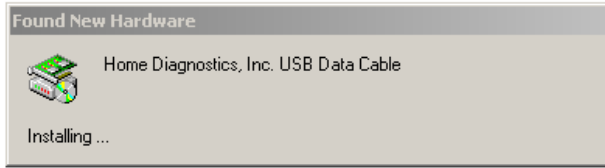
12. To remove any previously installed USB Data Cable drivers, select "USB Data Cable – Serial Port" via "Add/Remove Programs" option under Control Panel, and click <Change/Remove>.



13. Follow the on-screen instructions to continue with Un-installation.
14. Re-Start System once done.

## Windows™ 2000 Installation

1. Turn on Power to your computer (PC).
2. Insert the Home Diagnostics, Inc. installation CD into your computer's CD-ROM drive.
3. Plug the USB connector end of the Cable into one of the computer's USB port.



*Windows™ should inform you that it has found new hardware and automatically launches the "Found New Hardware" Wizard.*

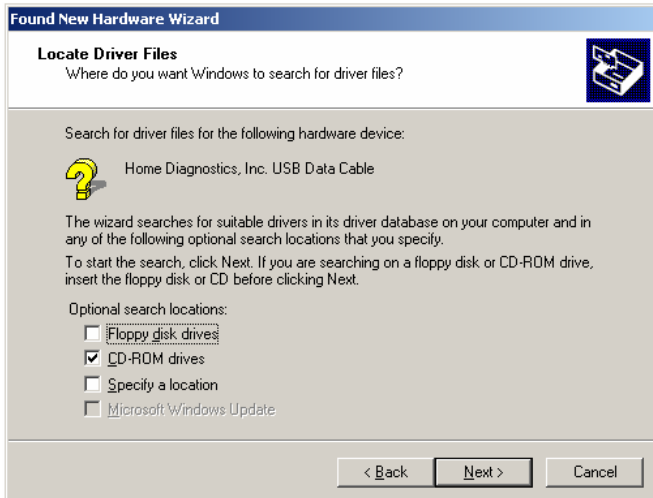
4. Click the <Next> button.



*Windows™ should prompt you with Search Options. Select Search for a suitable driver for my device (recommended)*

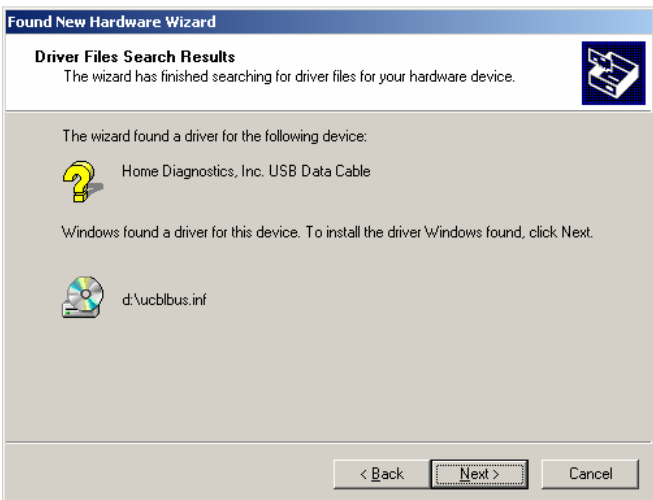
5. Click the <Next> button.





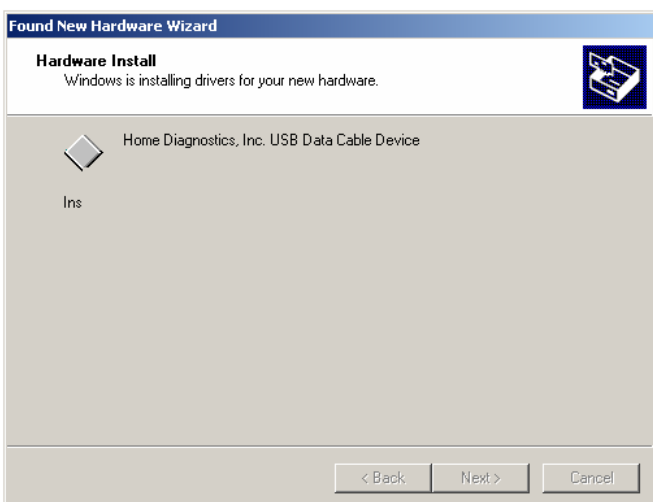
*Windows™ should then prompt you with driver files location, and/or driver files install media. Select CD-ROM drives*

6. Click the <Next> button.

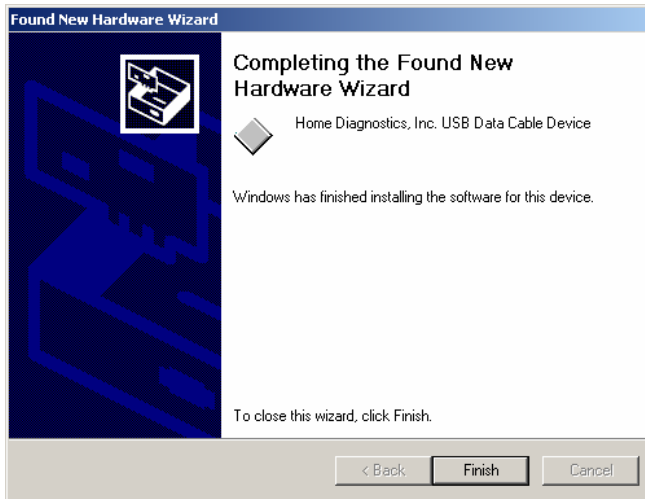


*Windows™ should inform you that it has located the driver install files*

7. Click the <Next> button.



*Windows™ should begin driver installation*



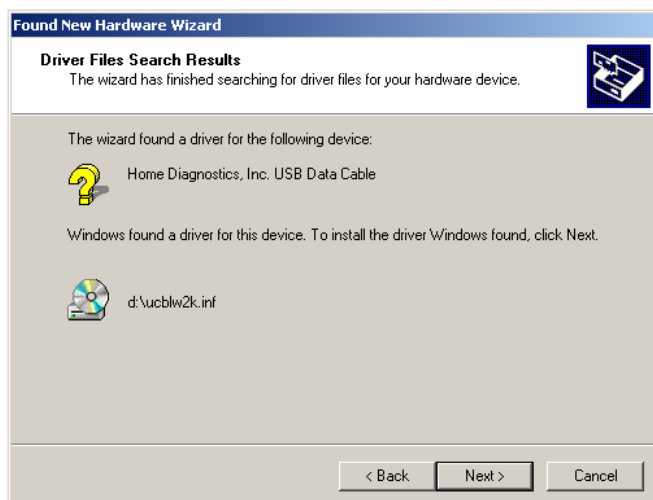
*Windows™ should inform you that it has finished with the driver installation. This only applies to the USB Device portion of the drivers, and you must still install drivers for the Serial Port portion*

8. Click Finish to continue with installation of Serial Port drivers.



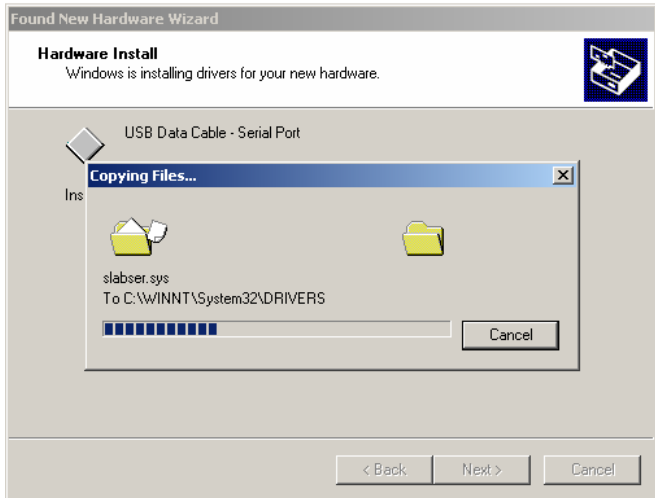
*Windows™ should again inform you that it has found new hardware and automatically launches the "Found New Hardware" Wizard*

9. Click Next to continue.



*Windows™ should inform you that it has located the driver install files*

10. Click Next to continue.



*Windows™ should begin driver installation*



*Once finished, Windows™ will inform that the Serial Port portion of the drivers is installed.*

*By going to the Device Manager under "System" in the Windows™ 2000 Control Panel you should be able to see the installed Home Diagnostics, Inc. USB Data Cable Device.*

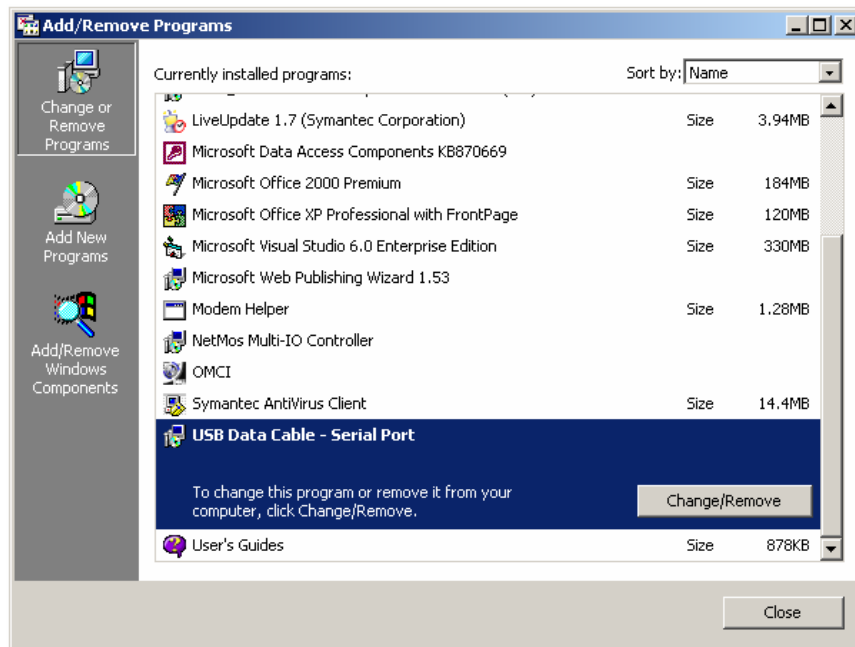
*An entry should be present under Universal Serial Bus Controllers, and another one under Ports (COM and LPT).*

*Note: COM Port Settings (Bits per Second, etc) will need to be configured as per the requirements of your particular Download Application.*

11. Click Finish to complete the installation.

#### Windows™ 2000 Un-Install

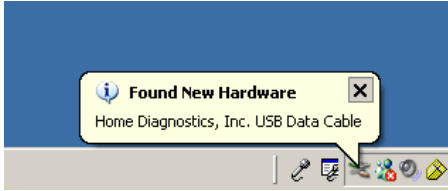
12. To remove any previously installed USB Data Cable drivers, select "USB Data Cable – Serial Port" via "Add/Remove Programs" option under Control Panel, and click <Change/Remove>.



13. Follow the on-screen instructions to continue with Un-installation.

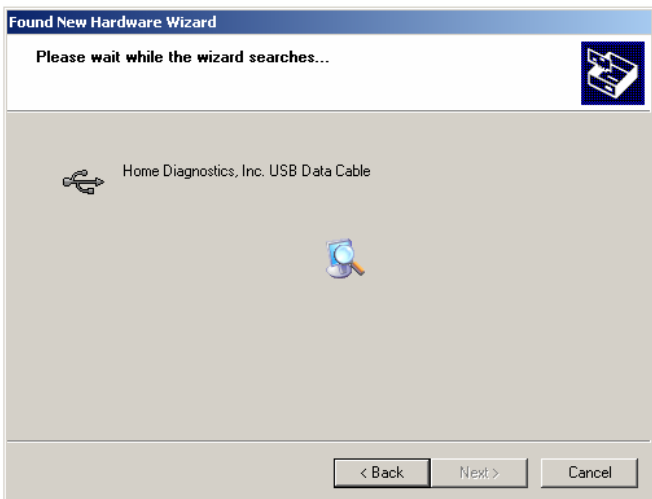
## Windows™ Xp Installation

1. Turn on Power to your computer (PC).
2. Insert the Home Diagnostics, Inc. installation CD into your computer's CD-ROM drive.
3. Plug the USB connector end of the Cable into one of the computer's USB port.

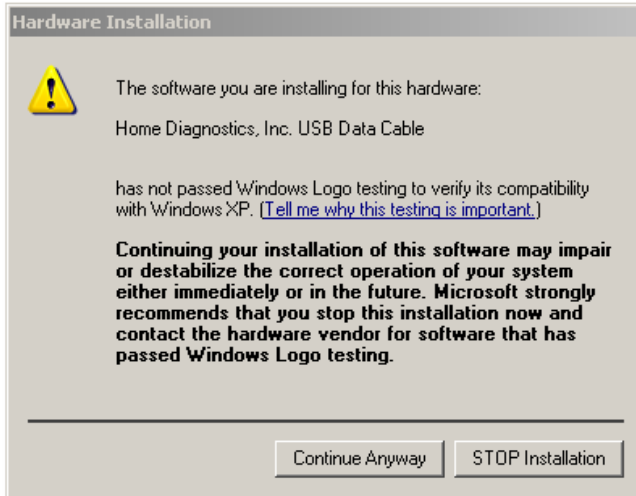


*Windows™ should inform you that it has found new hardware and automatically launches the "Found New Hardware" Wizard.*

4. Click the <Next> button.

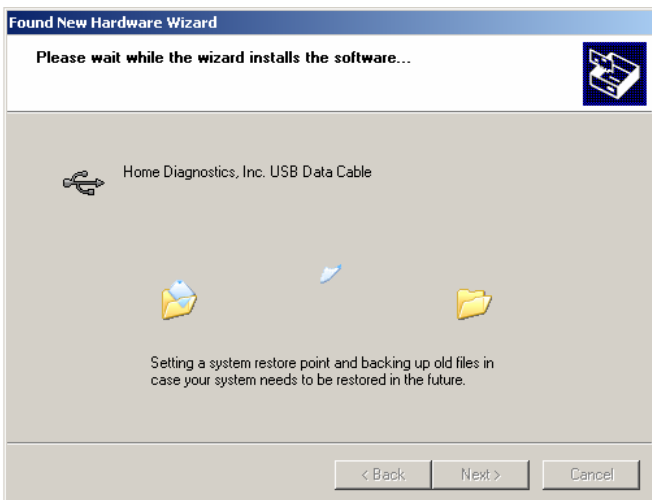


*Windows™ should inform you that is searching for drivers*



*When the Wizard locates the drivers, you will be notified via the Windows™ Xp Logo Testing Warning Screen, that Windows™ Xp has not certified these drivers. This only means that this Software has not yet been submitted to Windows™ for logo testing, and it is perfectly ok to install*

5. Click the <Continue Anyway> button.



*Windows™ should begin driver installation*



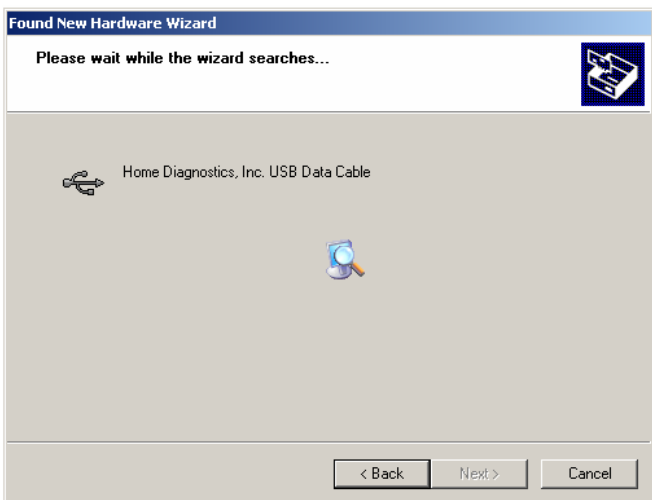
*Windows™ should inform you that it has finished with the driver installation. This only applies to the USB Device portion of the drivers, and you must still install drivers for the Serial Port portion*

6. Click Finish to continue with installation of Serial Port drivers.

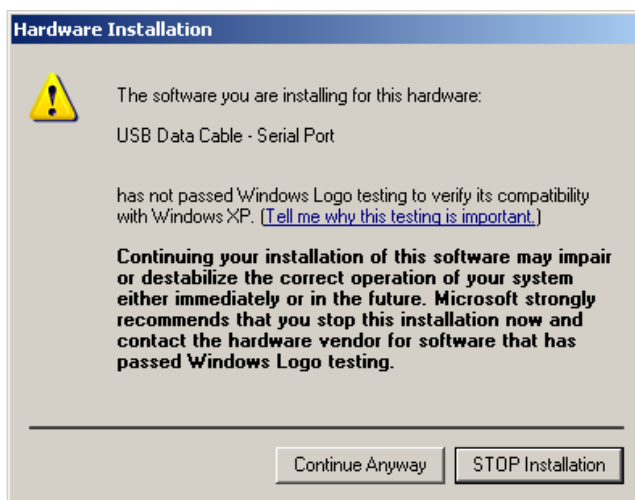


*Windows™ should again inform you that it has found new hardware and automatically launches the “Found New Hardware” Wizard*

7. Click Next to continue.

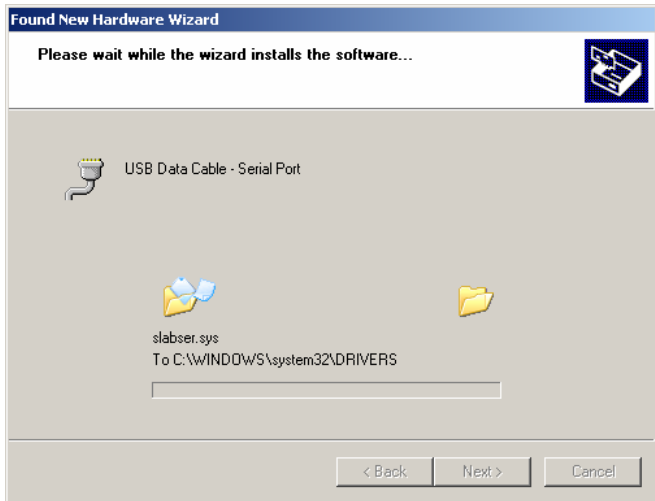


*Windows™ should again inform you that is searching for drivers*

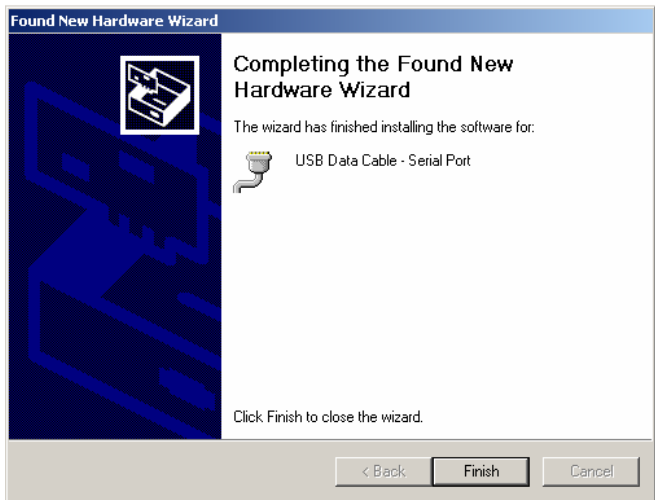


*When the Wizard locates the drivers, you will be again notified via the Windows™ Xp Logo Testing Warning Screen, that Windows™ Xp has not certified these drivers. This only means that this Software has not yet been submitted to Windows™ for logo testing, and it is perfectly ok to install*

8. Click Next to continue.



*Windows™ should begin driver installation*



*Once finished, Windows™ will inform that the Serial Port portion of the drivers is installed, and that your new hardware is ready for use.*

*By going to the Device Manager under "System" in the Windows™ Xp Control Panel you should be able to see the installed Home Diagnostics, Inc. USB Data Cable Device.*

*An entry should be present under Universal Serial Bus Controllers, and another one under Ports (COM and LPT).*

*Note: COM Port Settings (Bits per Second, etc) will need to be configured as per the requirements of your particular Download Application.*

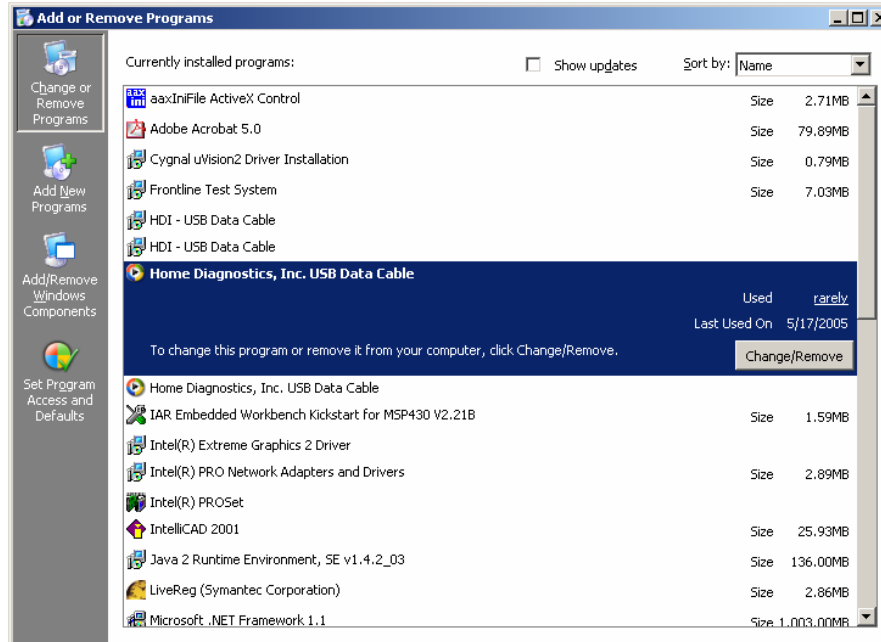


9. Click Finish to complete the installation.

### Windows™ Xp Un-Install

10. To remove any previously installed USB Data Cable drivers, select "Home Diagnostics, Inc. USB Data Cable" via "Add or Remove Programs" option under Control Panel, and click <Change/Remove>.





11. Follow the on-screen instructions to continue with Un-installation.